

Rv908m32 Receiver Specifications

V3.1

Revision History

Document Version	Hardware Version	Revision Date	Note
V3.0	V10	2020/1	New edition
V3.1	V10	2022/3	Modified overview type

Overview

Rv908m32 is a standardize product for LED screen manufacturer, which is integrated with 12 standard hub75-type connectors and does not require an extra hub card. One card supports up to 384*512pixels and up to 24 sets of RCG data.

Functions and features

1. Single card can support 24 group of RGB data output mode
2. Maximum supports 384X512 pixels (**Please note that there are recommended values depending on the design of LED screen**)
3. Supports brightness calibration pixel by pixel and single-card color space conversion
4. Supports network cable BER test
5. Supports configuration file read back
6. Supports 138 decode, 595 serial decode and so on
7. Realizes high refresh and high gray level effect

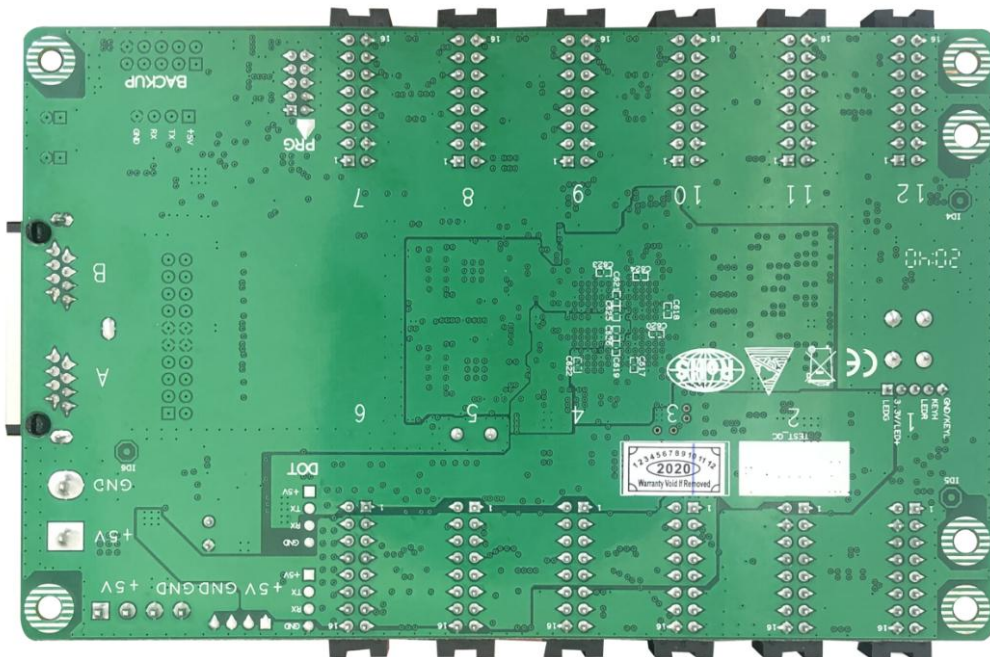
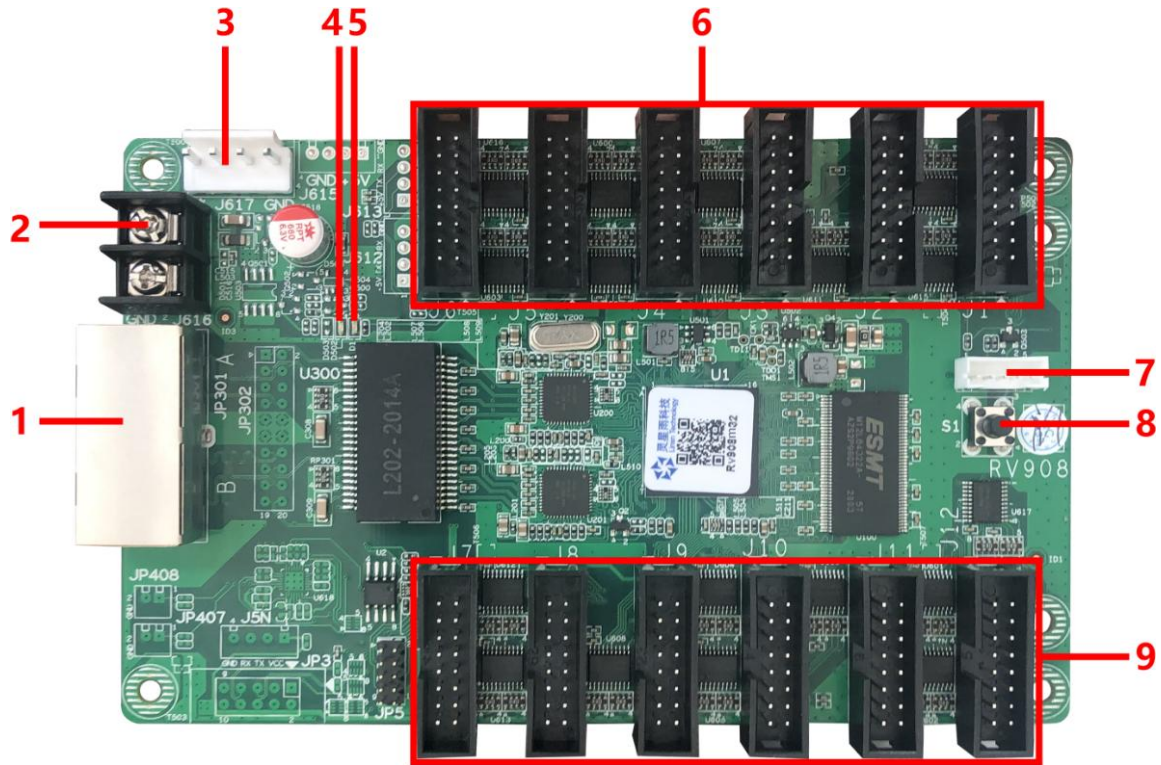


Appearance

Official website: www.linsn.com

Add: Floor 15&16, Jiajiahao Business Building, No. 10168, Shennan Blvd,
Nanshan District, Shenzhen

Tel: +86-0755-86183590/ 4008836968



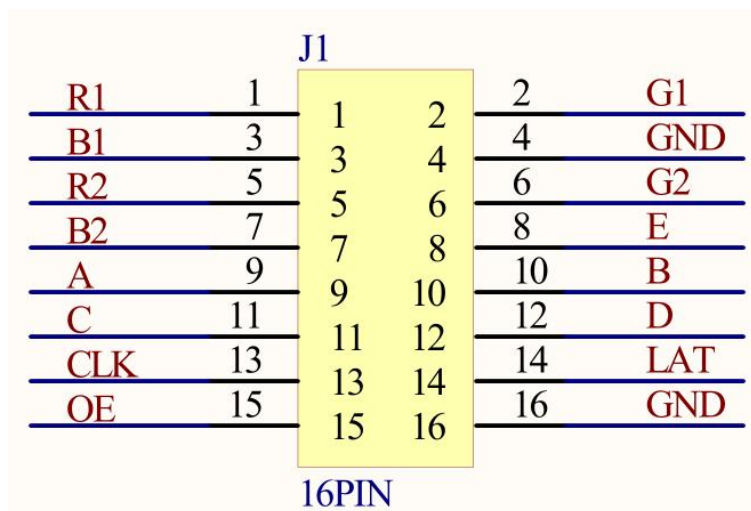
Official website: www.linsn.com

Add: Floor 15&16, Jiajiahao Business Building, No. 10168, Shennan Blvd,
Nanshan District, Shenzhen

Tel: +86-0755-86183590/ 4008836968

No.	1	2	3	4
Description	Gigabit port	Power connector	Power port	Red power indicator
No.	5	6/9	7	8
Description	Green indicator	Hub75 Connector	Self-test extension port	Self-test button

Pinouts



/	R1	1	2	G1	/
/	B1	3	4	GND	GND
/	R2	5	6	G2	/
/	B2	7	8	E	Row selection signal
Row selection signal	A	9	10	B	Row selection signal
Row selection signal	C	11	12	D	Row selection signal
Scan clock	CLK	13	14	LAT	Latch

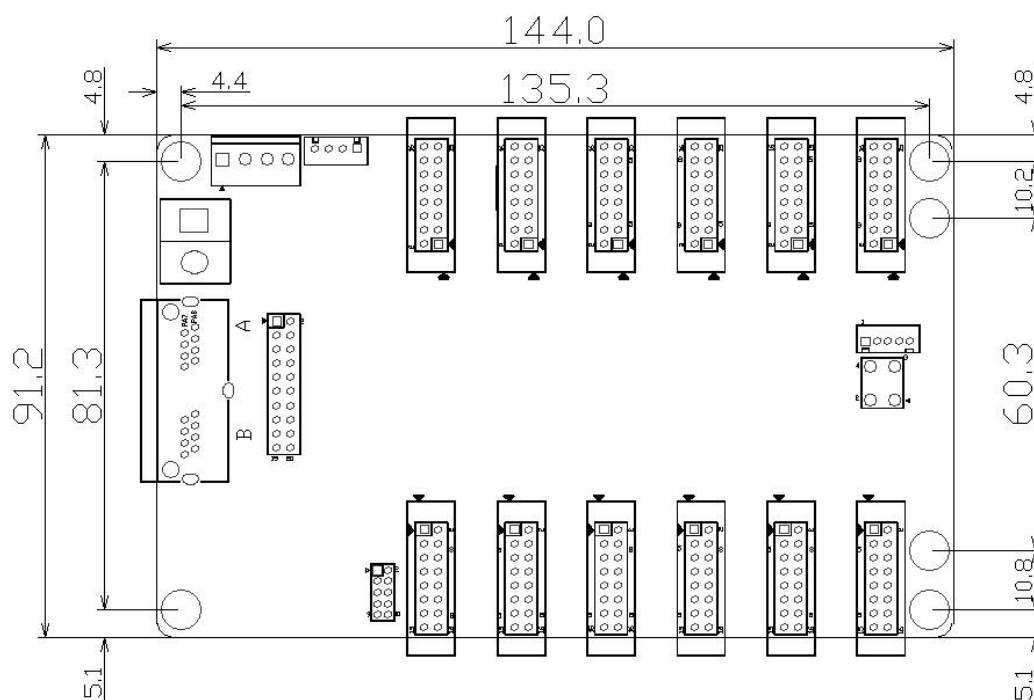
Official website: www.linsn.com

Add: Floor 15&16, Jiajiahao Business Building, No. 10168, Shennan Blvd,
Nanshan District, Shenzhen

Tel: +86-0755-86183590/ 4008836968

Display enable	OE	15	16	GND	GND
----------------	----	----	----	-----	-----

Dimension



Specifications

Capacity	384X512 Pixels	
Power	Input Voltage	DC4.5V ~ 5.5V
	Rated power consumption	3W
Working	Temperature	-20℃ ~ 70℃
Environment	Humidity	0% ~ 95%
Physical	Dimensions	144.0 X 91.2mm
Dimensions	Weight	99g
Packing	Packing	Each card packed with small red foam

Official website: www.linsn.com

Add: Floor 15&16, Jiajiahao Business Building, No. 10168, Shennan Blvd,
Nanshan District, Shenzhen

Tel: +86-0755-86183590/ 4008836968

Info		bag, and 100pcs per carton
	Carton Dimension	622.0mm×465.0mm×176.0mm
	Carton Weight	12.7 kg

END